

## Features:

- PVC or Teflon® housing
- Mounting cap available in a variety of thread configurations
- Teflon® housing ideal for use in chemically aggressive environments

## Applications:

- Level measurement
- Open channel flow
- Obstacle avoidance
- Proximity

## Options:

- Thermistors are available for temperature compensation

## Cable:

- 14" RG174u Coaxial
- Custom Lengths Available

## Specifications:

Best Operating Frequency	75 kHz +/- 4%
Min Receive Sensitivity <sup>1</sup>	-78 15" dB
with optional horn:	-64 15" dB
Insertion loss at 1m	
Impedance	1kΩ +/- 30%
(Min parallel resistance)	
Free (1kHz) Capacitance	3000pF +/- 100pF
Min/Max Sensing Range <sup>2</sup>	8" – 15'
Beamwidth:	12°
(-3dB full angle)	5° w/ horn
Maximum Driving Voltage:	350Vp-p
(2% duty cycle tone burst)	
Operating Temperature:	-17.8°C – 57.2°C
	(-0°F – 135°F)

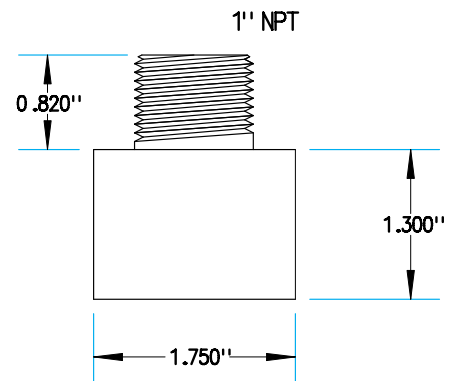
All specifications typical at 22°C (71.6°F)

<sup>1</sup> By comparing input drive voltage to return echo at 1m. With 30 drive cycles.

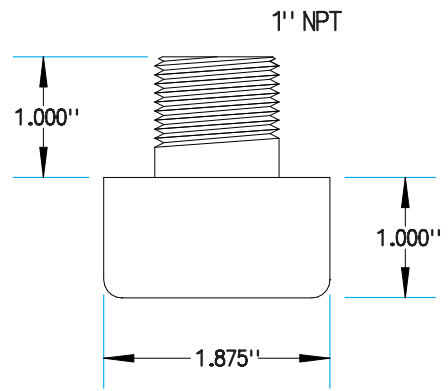
<sup>2</sup> Pulse-Echo Mode. Min. and Max. ranges are best case scenarios. Actual range may vary, depending on drive circuitry and signal processing.

©Teflon is a registered trademark of E. I. du Pont de Nemours and Company.

™Parsonics is a trademark of Parsonics Corporation.



**Teflon® Housing**



**PVC Housing**